

EPIDEMIOLOGIE DESCRIPTIVE DES HEMOPATHIES MALIGNES

Dr DANHO Clotaire

INTRODUCTION

- PROLIFERATIONS
 - D'ORIGINE MEDULLAIRE: LEUCEMIES
 - ORIGINE PERIPHERIQUES: LYMPHOMES

ENTITES NOSOLOGIQUES

– LEUCEMIES AIGUES

- LAL, LAM, LA BICLONALE, LA BIPHENOTYPIQUE

– SD LYMPHOPROLIFERATIF

- LLC
- LMNH
- MDH
- MYELOME
- LYMPHOME DE BURKITT

– SD MYELOPROLIFERATIF

- LMC
- TE
- SMM
- MALADIE DE VASQUEZ

- EN CI,
 - HEMOPATHIES MALIGNES 14,05%
 - APRES LES TUMEURS GENITALES, DIGESTIFS ET LE SEIN
 - BIEN QUE MOINS FREQUENTES PAR RAPPORT AUX MALADIES TROPICALES PARASITAIRES
 - OCCUPENT UNE PLACE IMPORTANTE
 - PROBLEME MAJEUR DE SANTE PUBLIQUE

- OBJECTIF:

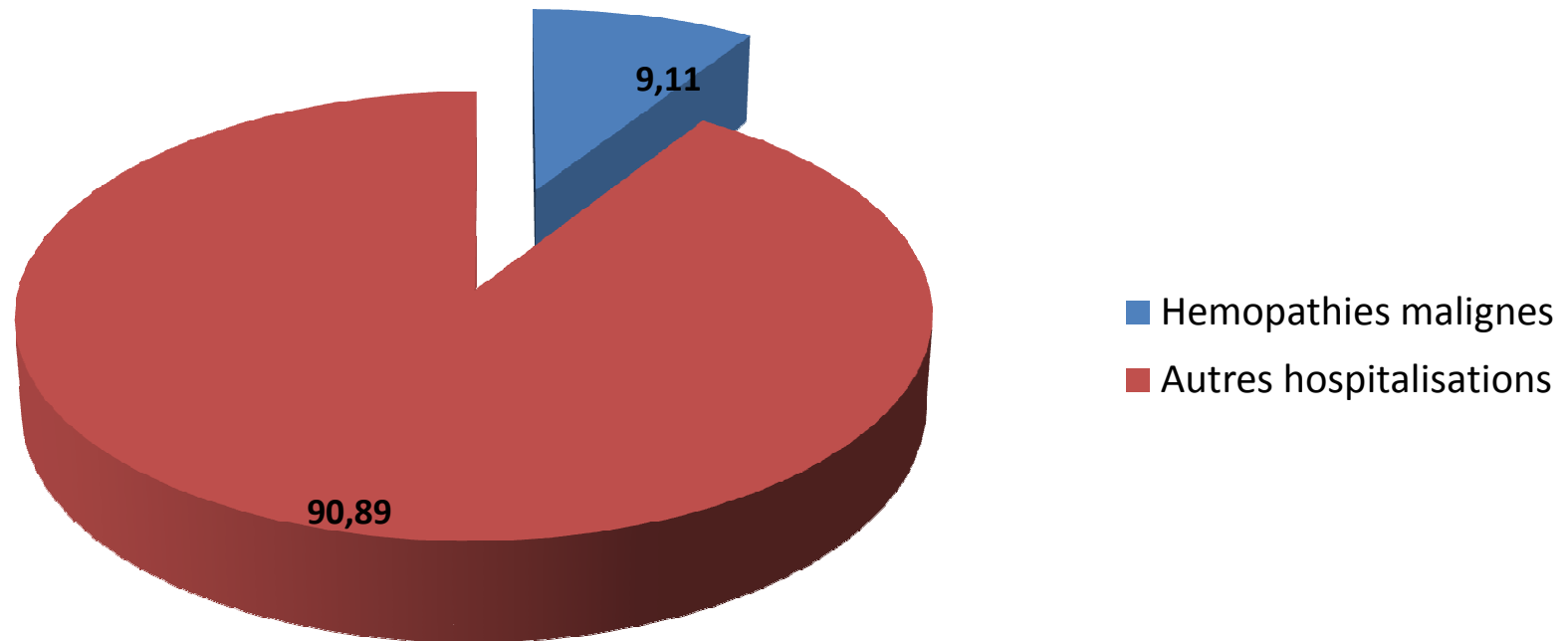
- DETERMINER L'INCIDENCE ET LA PREVALENCE DES HEMOPATHIES MALIGNES

MATERIEL ET METHODES

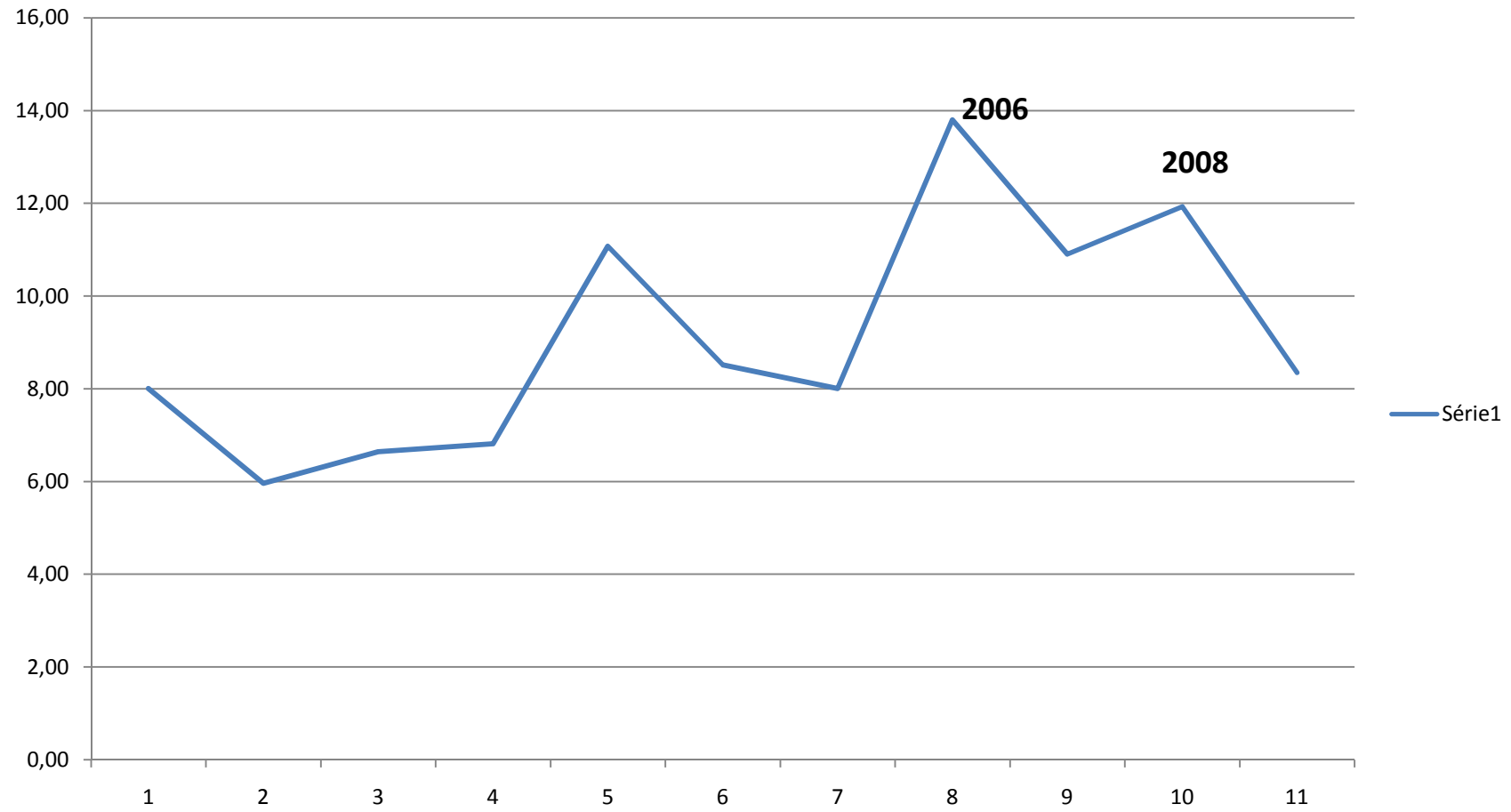
- HÉMATOLOGIE CLINIQUE CHU YOPOUGON
- ÉTUDE RÉTROSPECTIVE DESCRIPTIVE.
- JANVIER 1999 - 31 DÉCEMBRE 2009: 11 ANS
- BILAN DIAGNOSTIC :
ANAPATH/MLG/CYTOPONCTION
- SELECTION:
 - TOTAL : 6441
 - 587 PATIENTS
- PARAMETRES: AGE , SEXE

RESULTATS

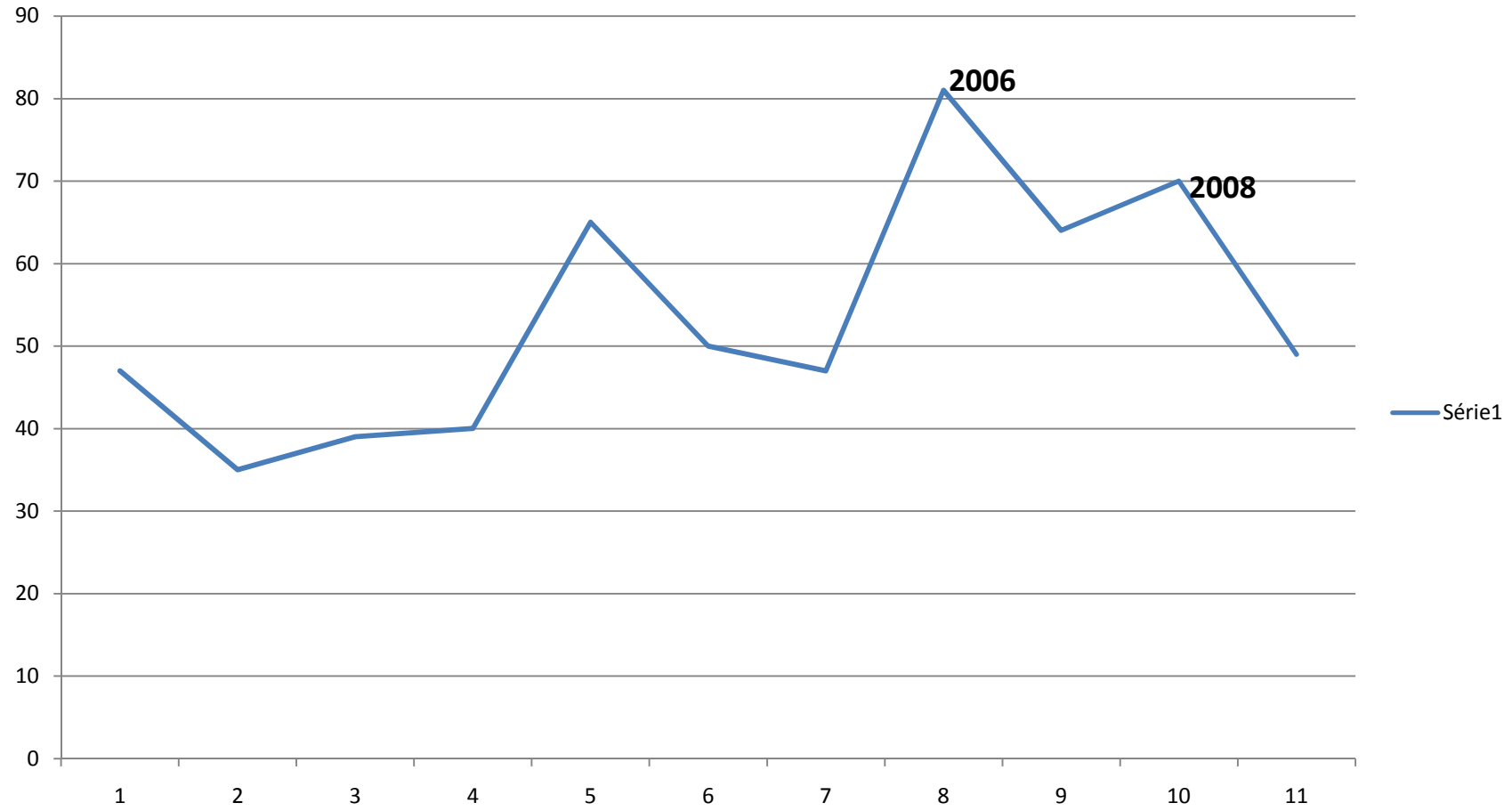
PREVALENCE GLOBALE



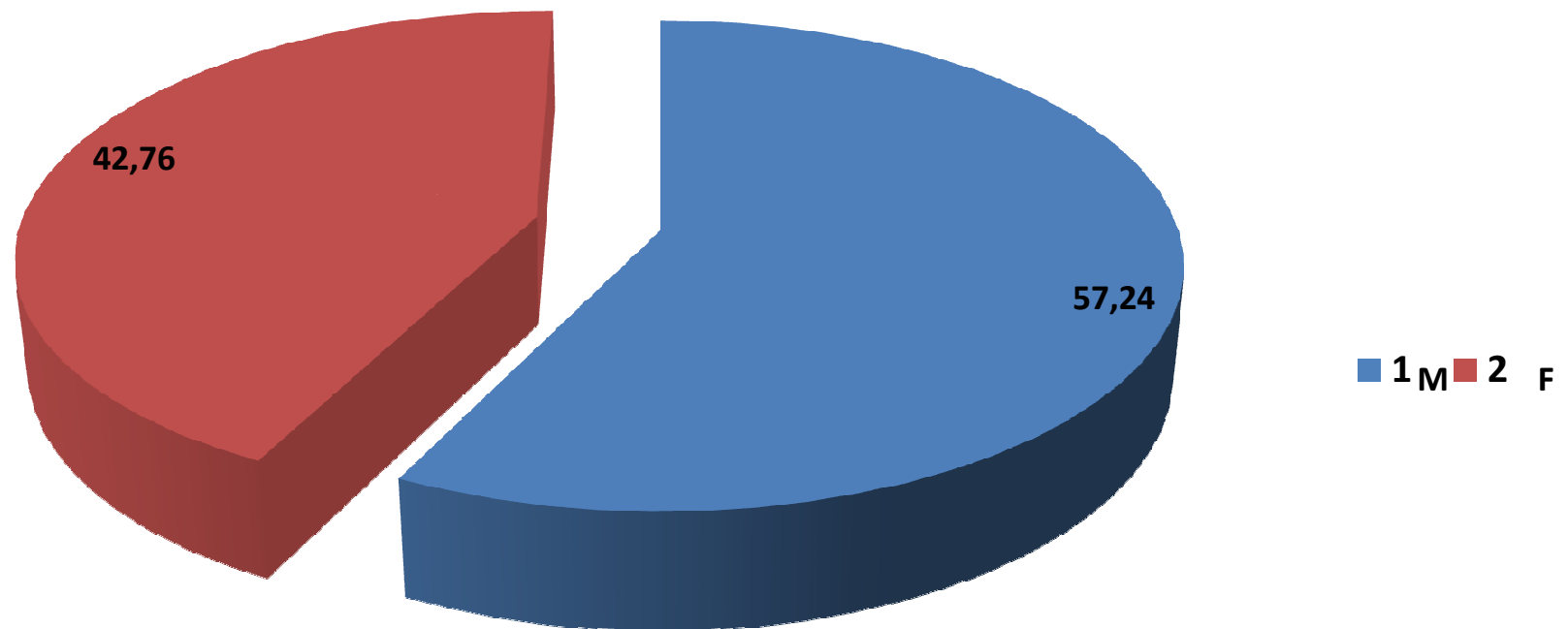
PREVALENCE



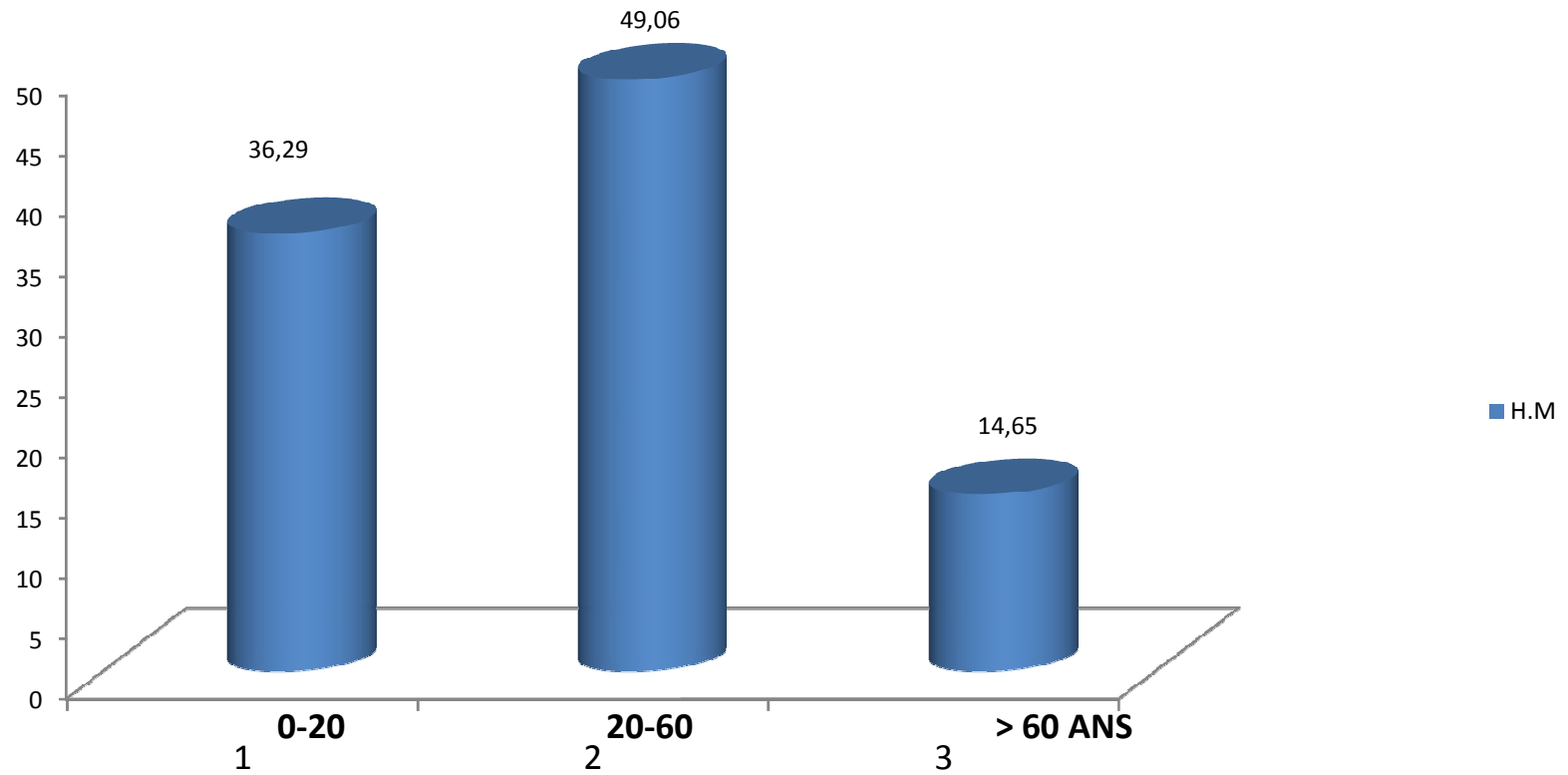
INCIDENCE GLOBALE



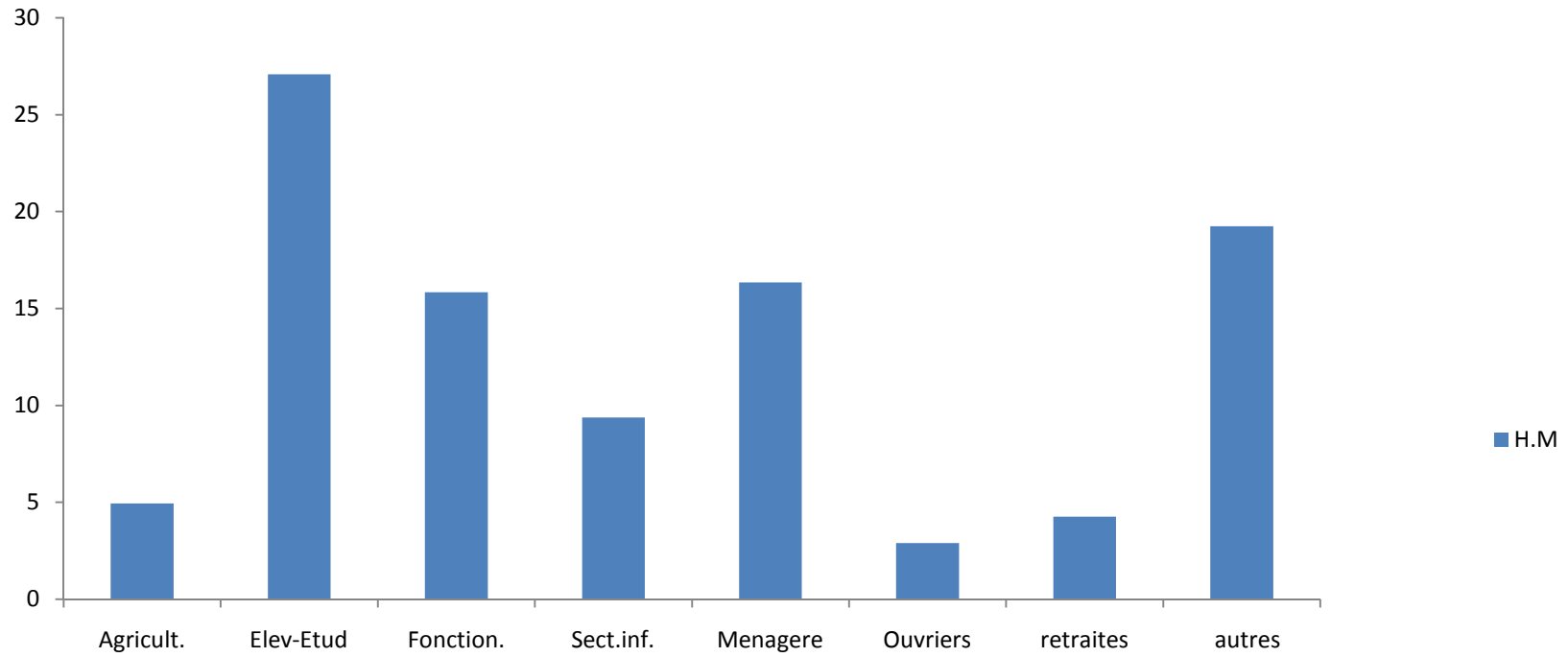
PREVALENCE GLOBALE: SEXE



PREVALENCE GLOBALE: AGE

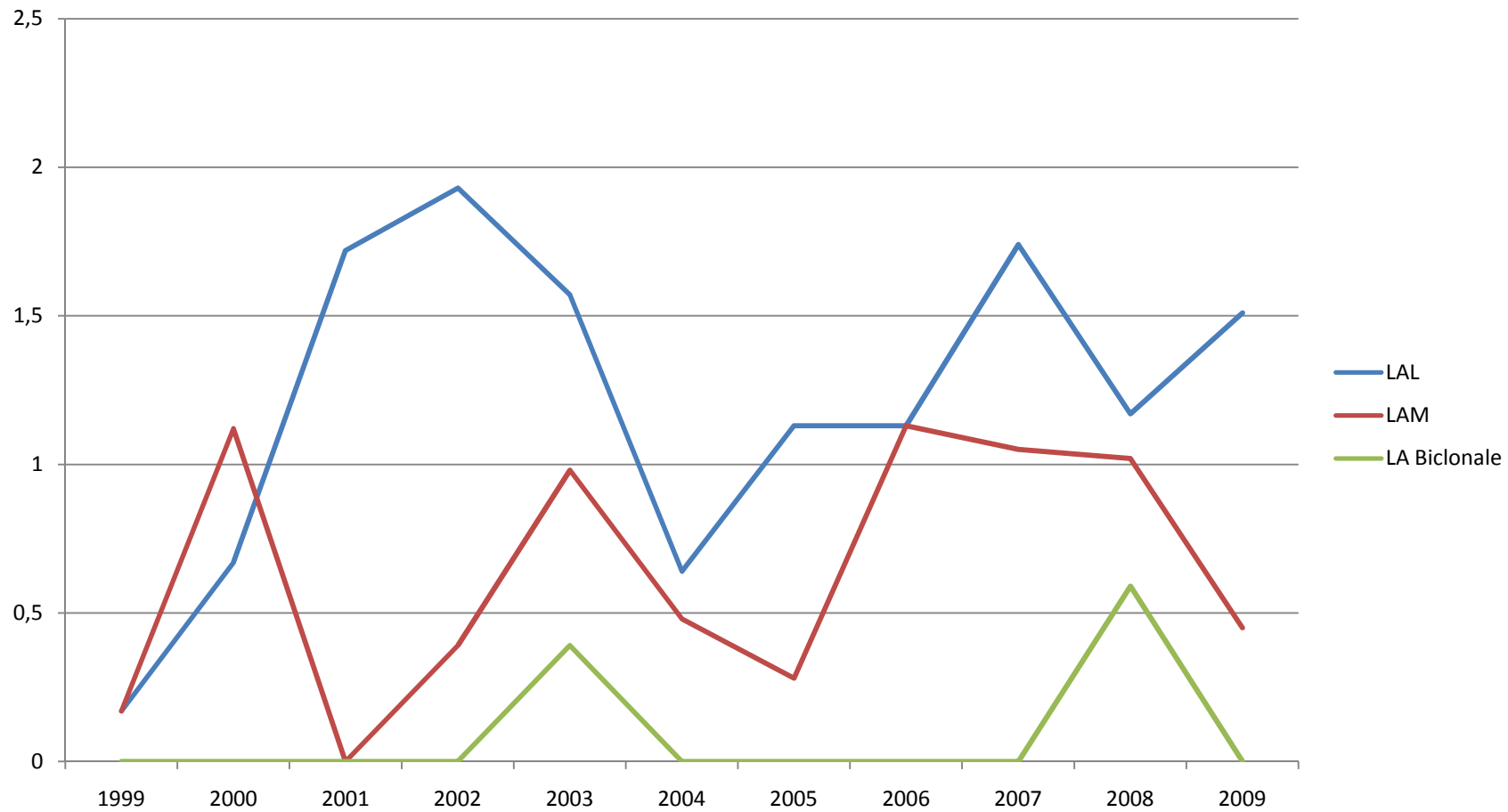


PROFESSION



LEUCEMIES AIGUES

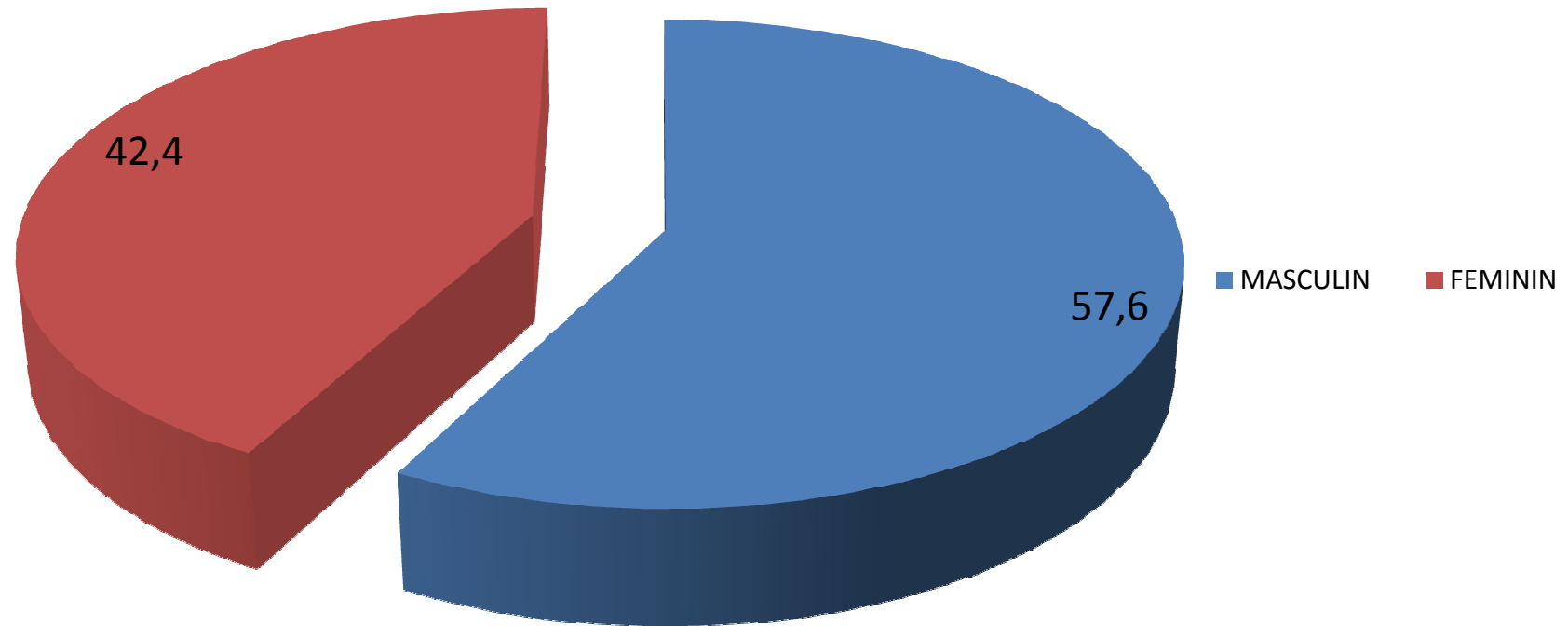
PREVALENCE DES LA



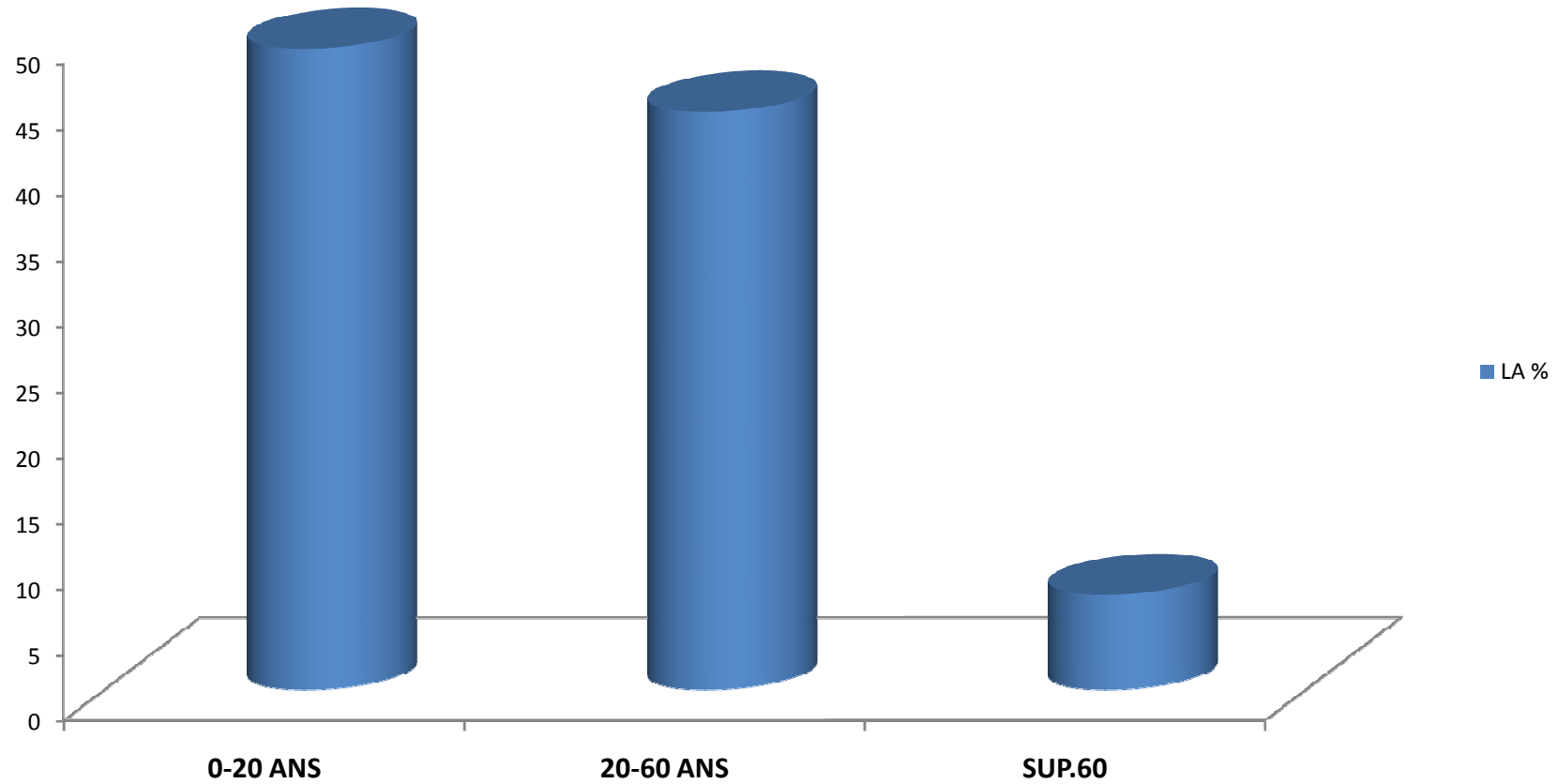
INCIDENCE DES LA

ANNEE	1999	2000	2001	2002	2003	2004	2005	2006	2007	2008	2009
LAL	1	3	7	10	8	4	8	8	10	8	10
LAM	1	5	0	2	5	3	2	8	6	7	3
LA Biclonale		0	0	0	2	0	0	0	0	4	0
TOTAL	2	8	7	12	15	7	10	16	16	19	13

LEUCEMIES AIGUES: SEXE

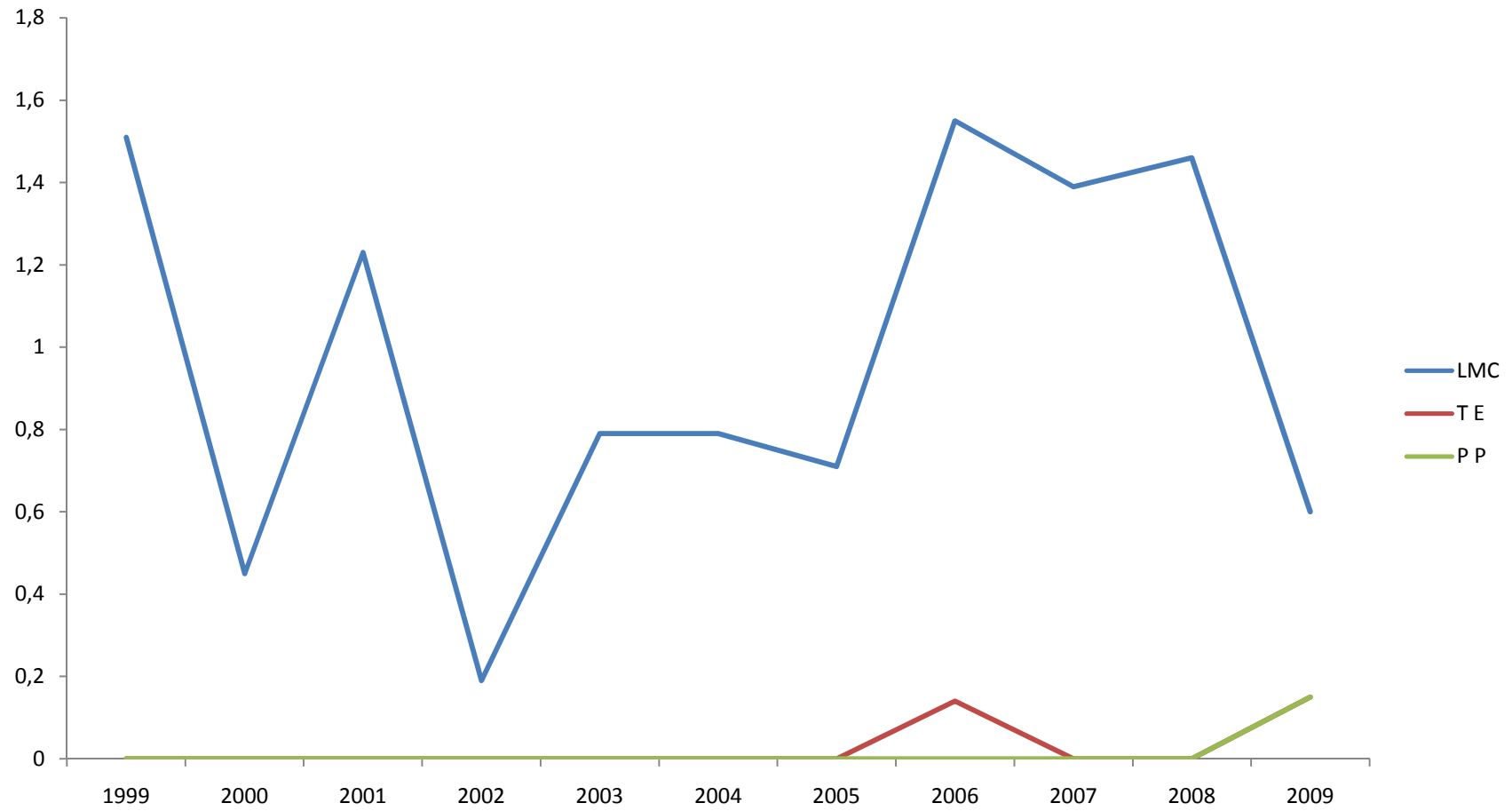


LEUCEMIES AIGUES: AGE

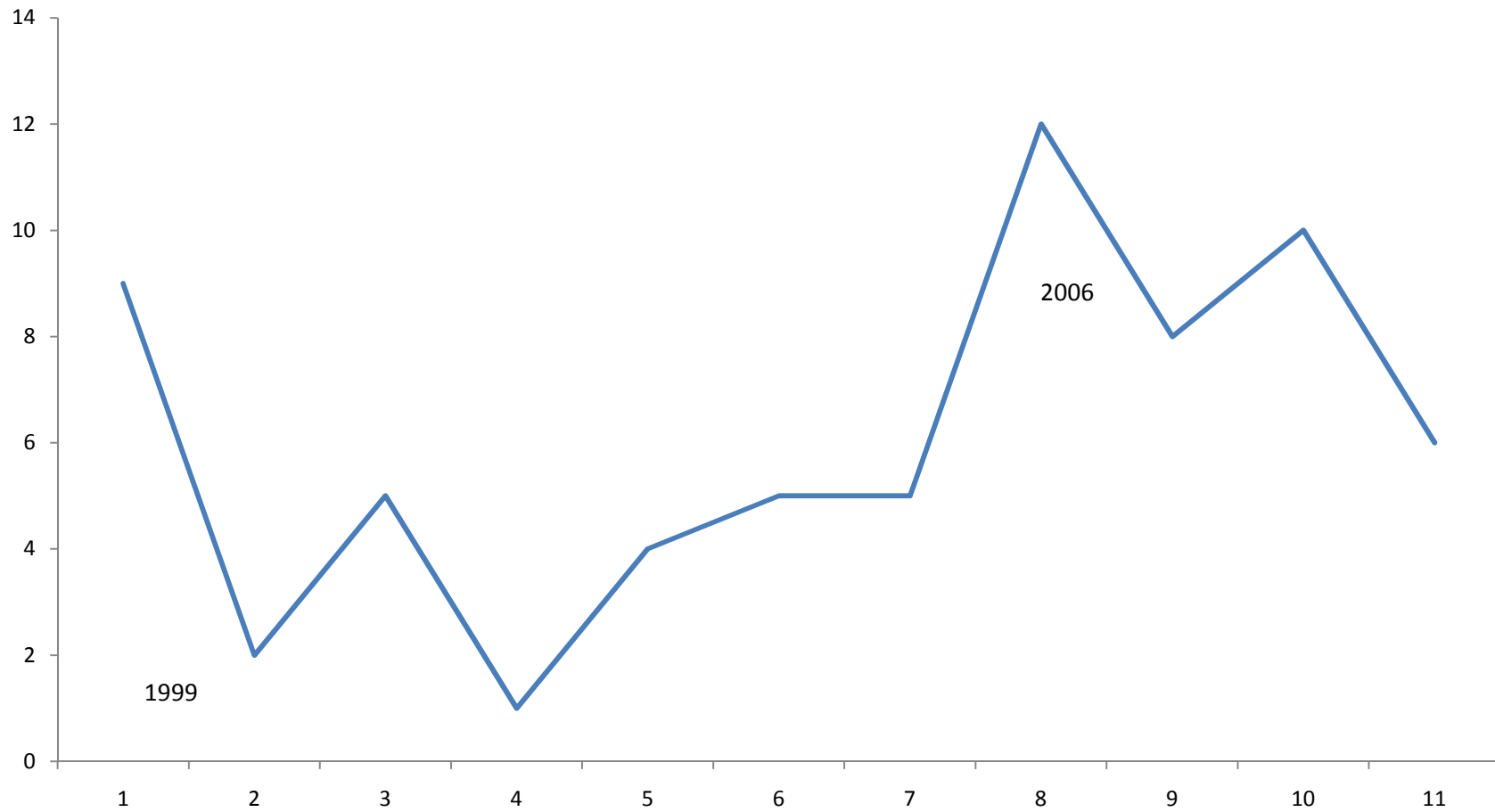


**SYNDROMES
MYELOPROLIFERATIFS**

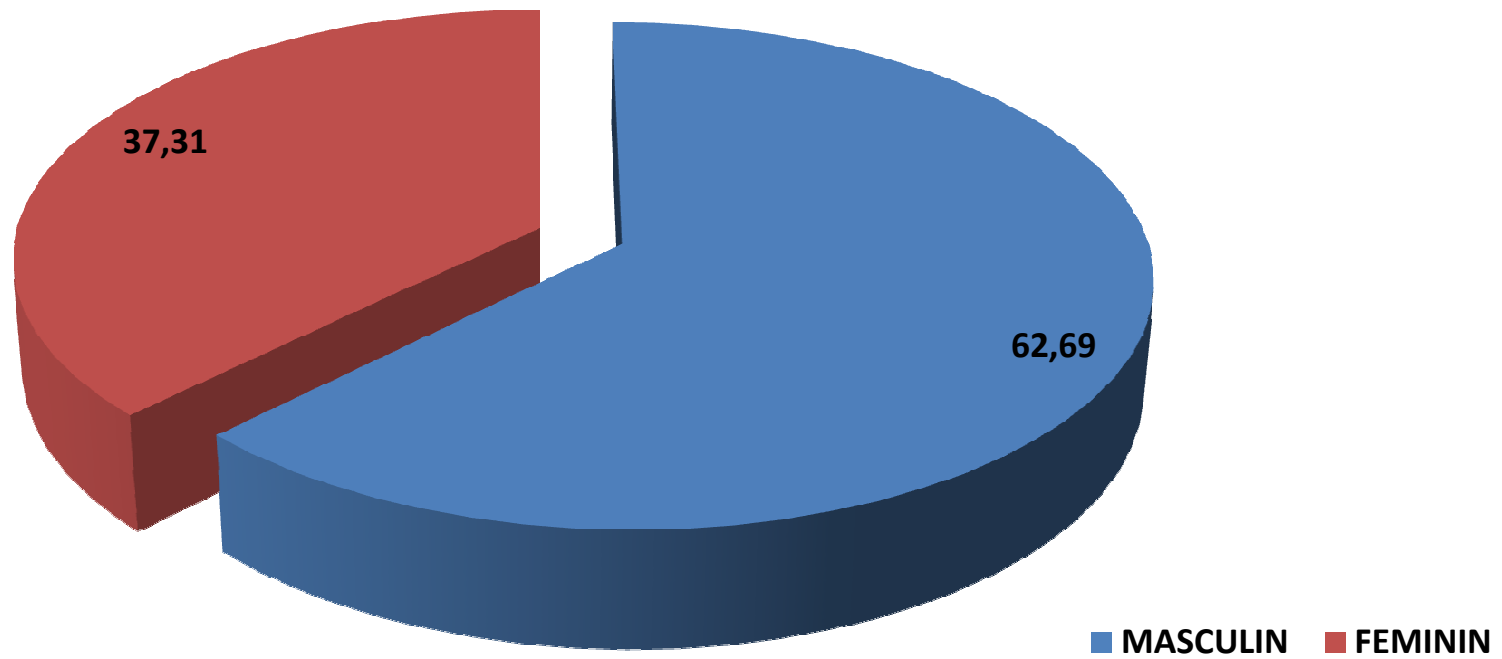
PREVALENCE SMP



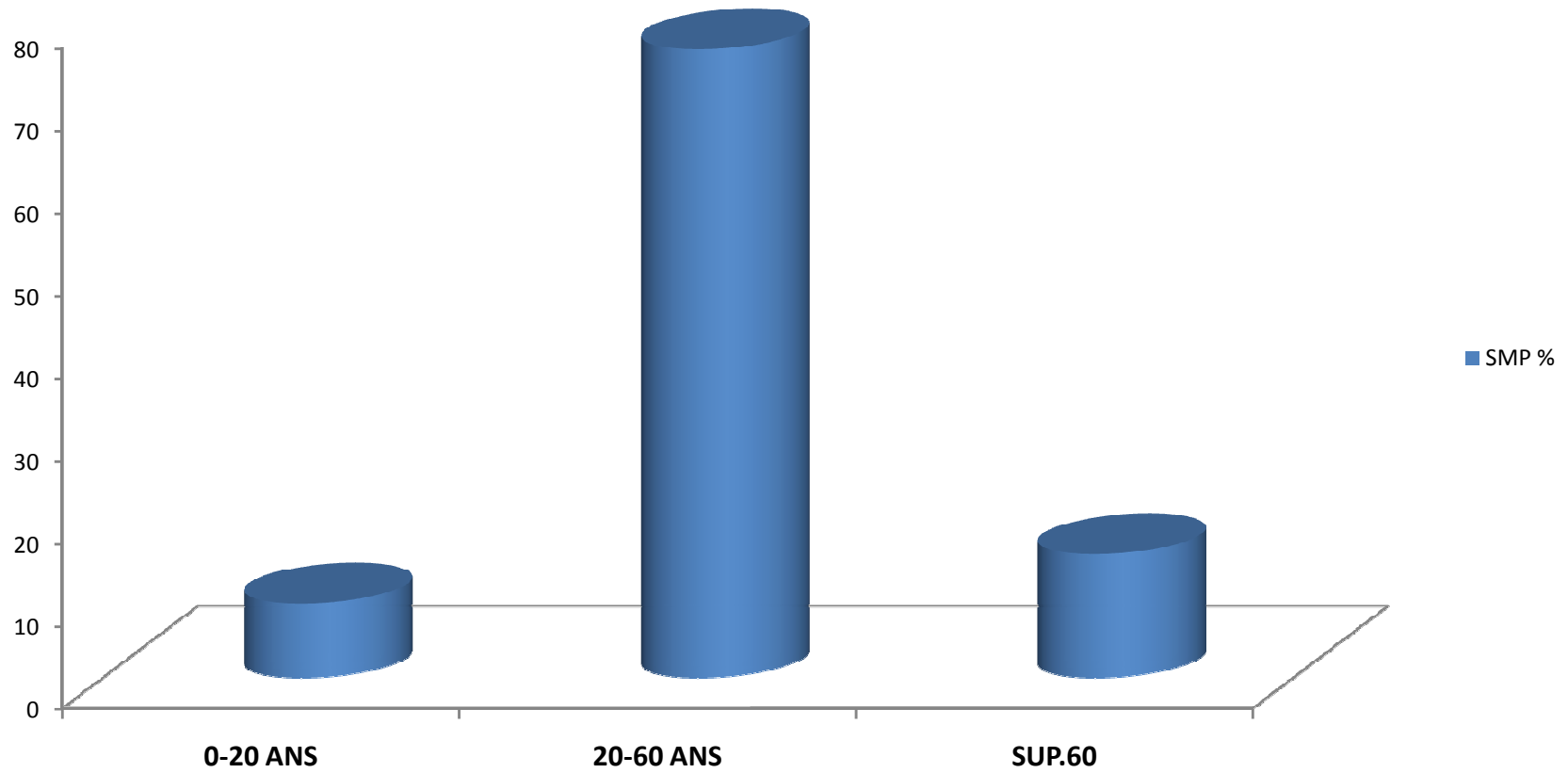
INCIDENCE SMP



SMP: SEXE

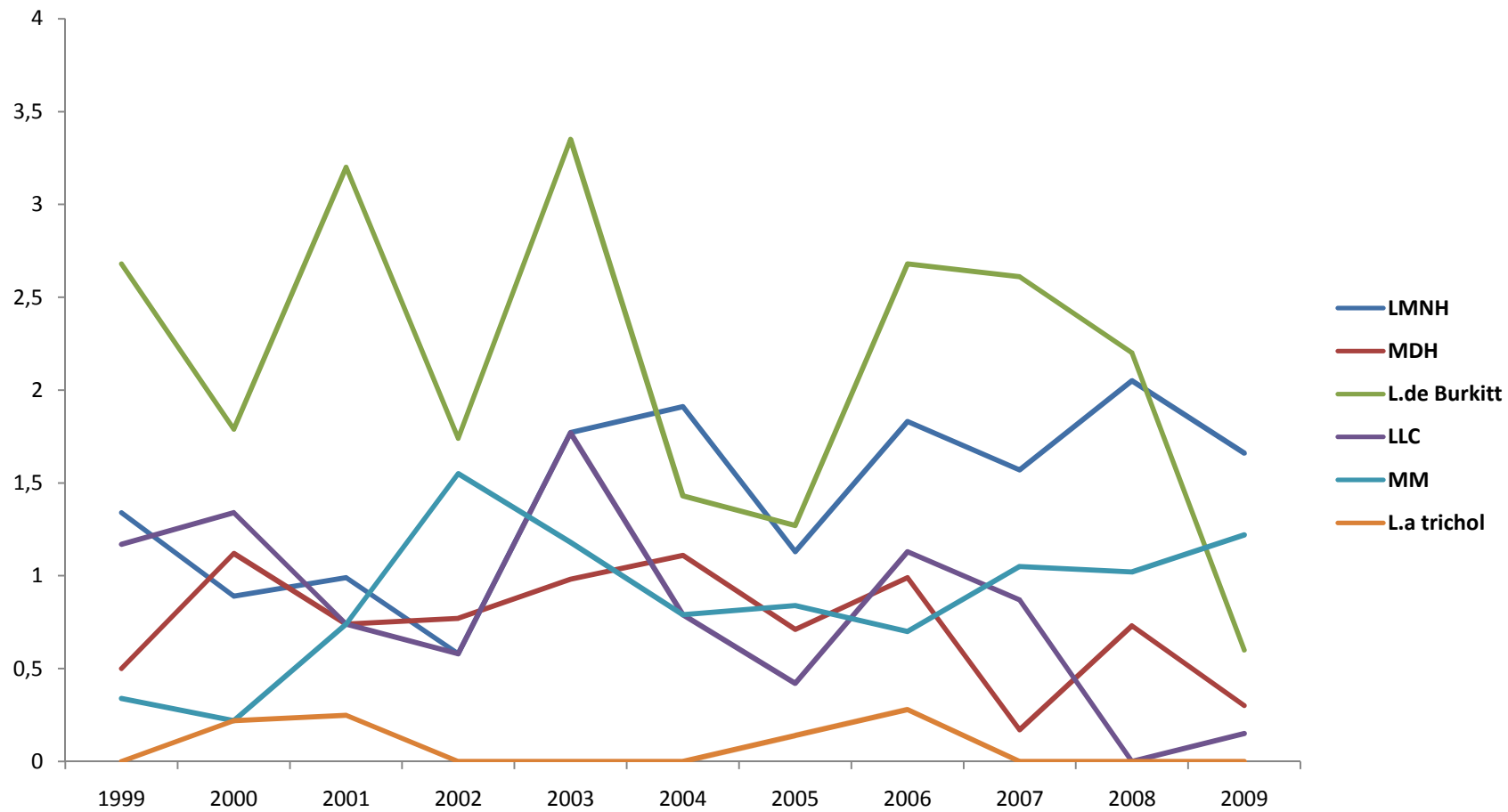


SMP: AGE

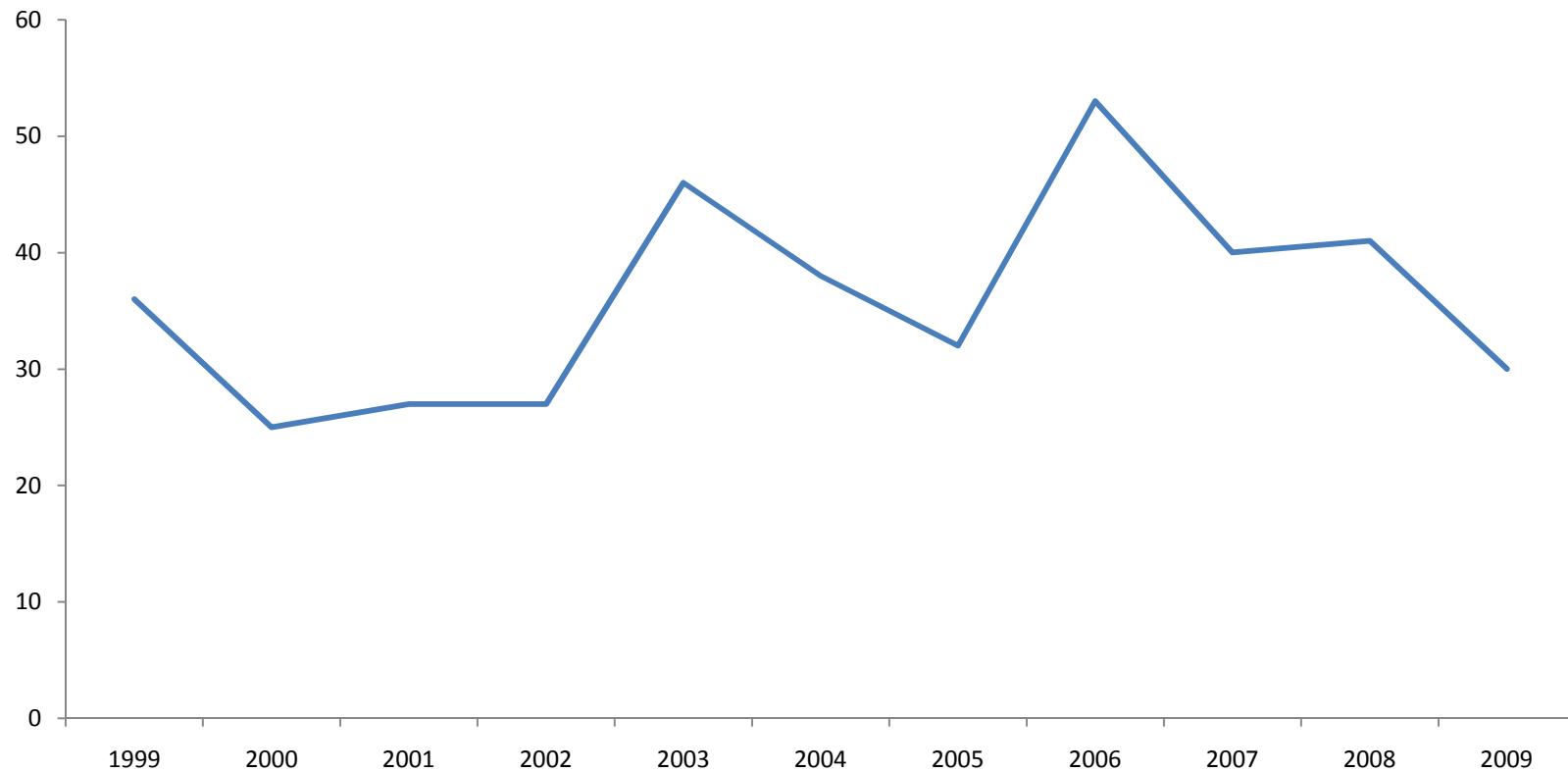


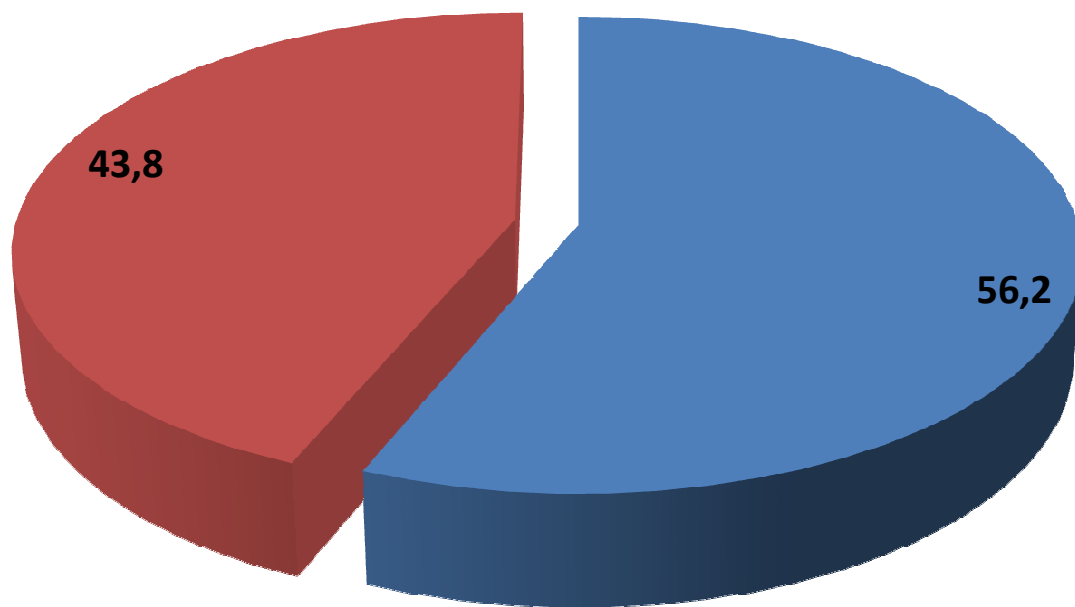
SYNDROMES LYMPHOPROLIFERATIFS

PREVALENCE SLP



INCIDENCE SLP





■ MASCULIN
■ FEMININ

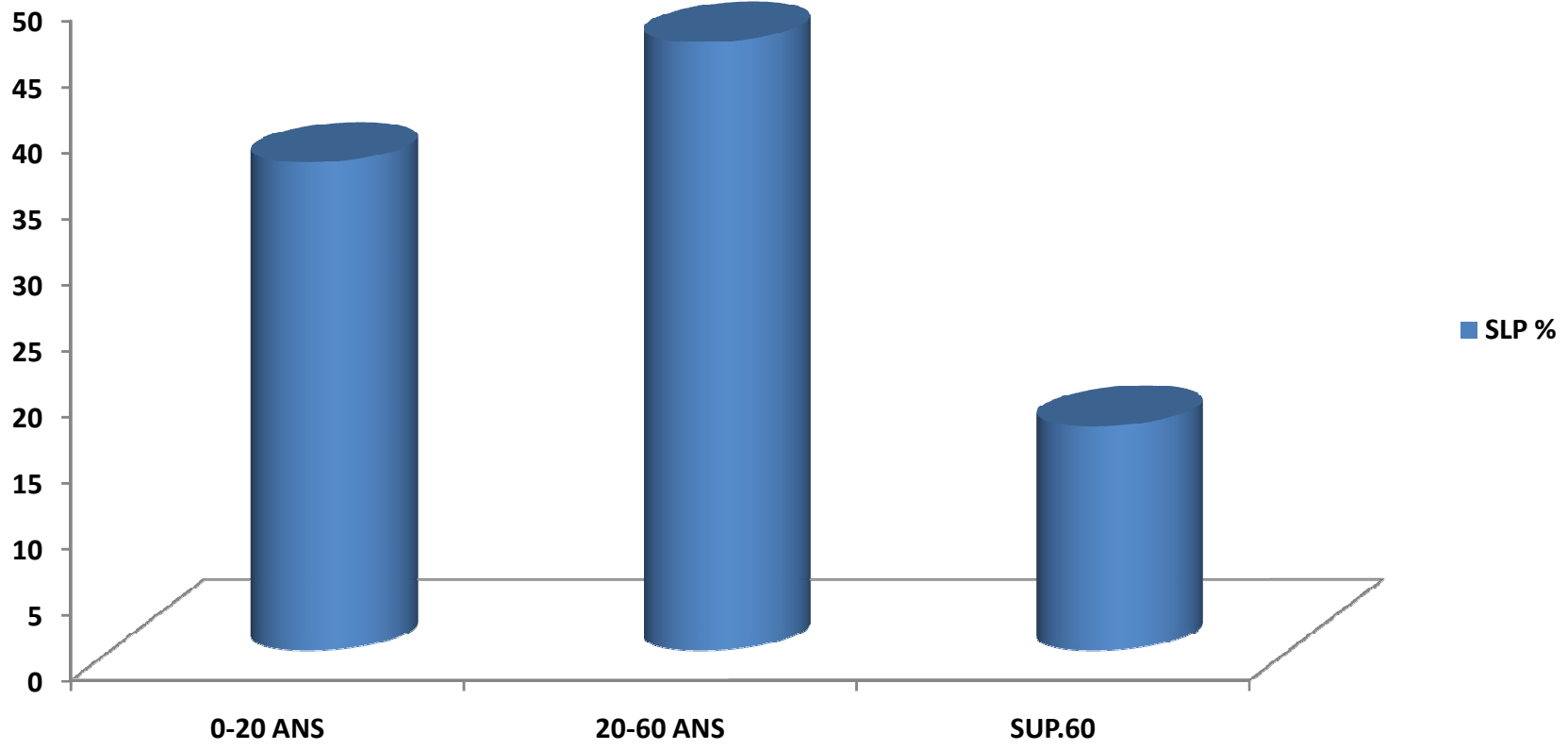
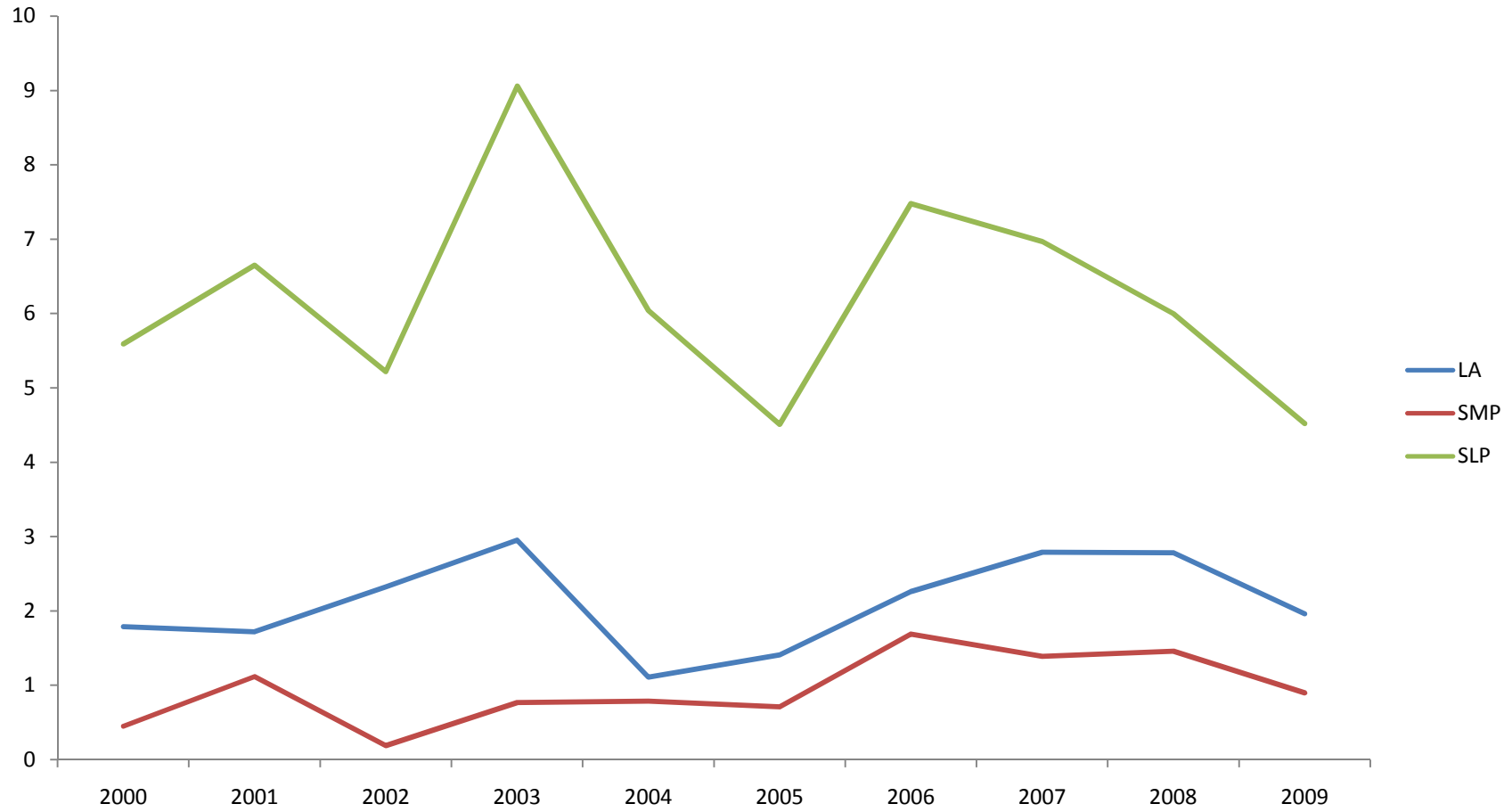
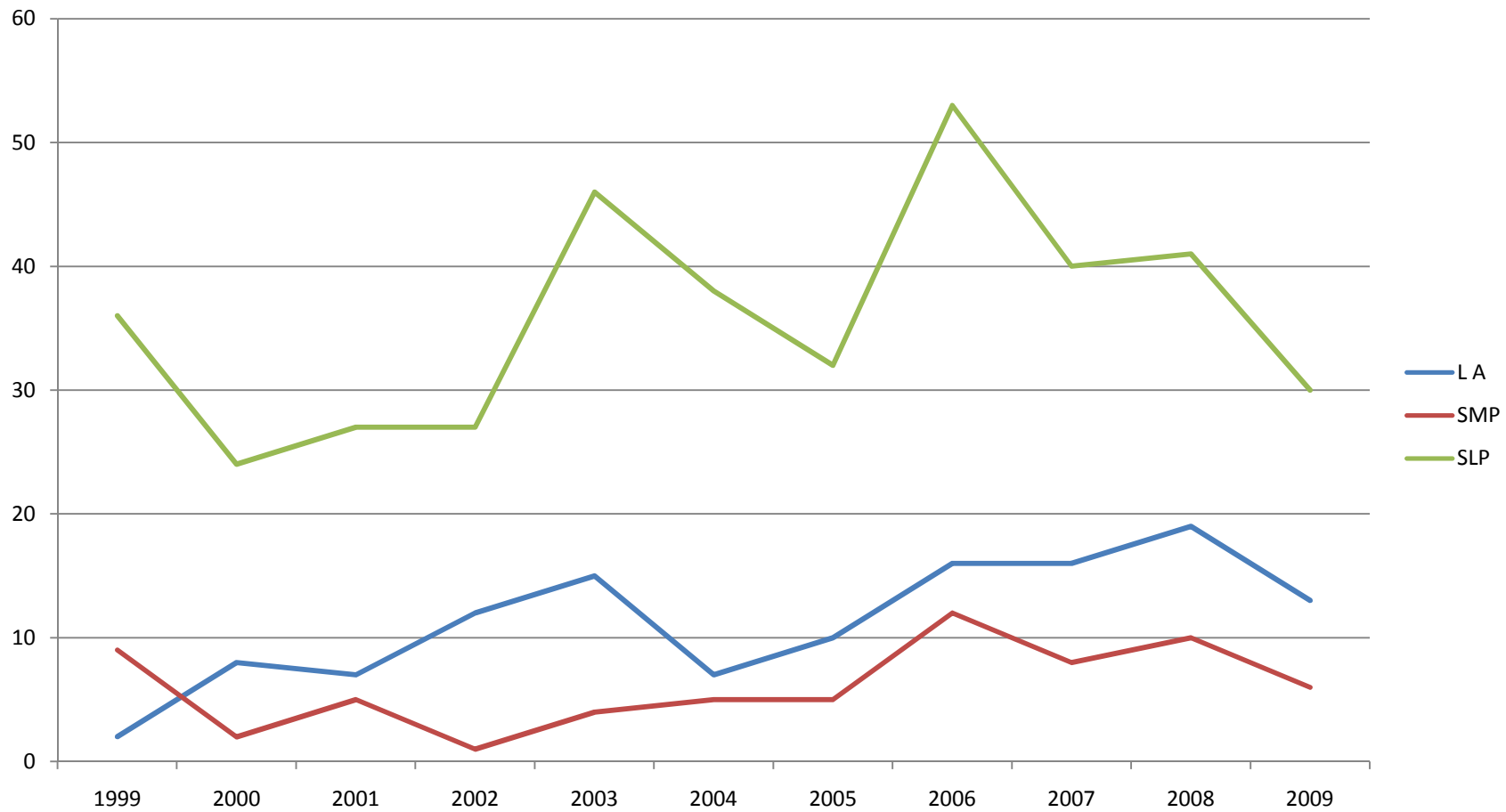


TABLEAU RECAPITULATIF

PRAVALENCE



INCIDENCE GLOBALE



MERCI